

Waverunner Sport User Manual



U S E R M A N U A L S P O R T

Waverunner Sport User Manual

Thank you for buying your Waverunner Sport.

Outstanding performance and reliability have made Waverunner bait boats amongst the most popular in the world. Designed by leading anglers in conjunction with engineers and technicians, there's a bait boat in the Waverunner range to answer all of your baiting, rig placement and depth-finding needs.

Please take the time to read and understand this manual. Your Waverunner Sport will deliver years of trouble-free usage when used and maintained correctly.

Contents

- 1 What you get with your Waverunner Sport Page 1**
- 2 Technical specifications Page 2**
- 3 Features Page 3**
- 4 Charging and battery maintainance Page 5**
- 5 Using your Waverunner Sport Page 8**
- 6 Bait boat optional accessories Page 12**
- 7 Warranty Page 15**

1

What you get with your Waverunner Sport

Your Waverunner Sport package contains the following items as standard:

- 1 **Bait boat** 1pc
- 2 **4 Channel remote control handset** 1pc
- 3 **6V 4.5AH lead-acid battery (including connecting wires)** 2pcs
- 4 **Ni-MH AA 1500mAh 1.2V rechargeable batteries for the remote control handset** 8pcs
- 5 **15V 1.2A home charger for bait boat** 1pc
- 6 **12V 0.5A home charger for handset** 1pc
- 7 **Rubber antenna for bait boat** 1pc

* For optional accessories (available separately) please see section 6 of this manual.



2

Technical specifications

Product model: Waverunner Sport

Dimensions (L x W x H):
470mm x 310mm x 250mm
(not including height of antenna)

Product gross weight: 7.3kg

Product net weight (including batteries): 5.6kg

Product outfit: 1 independent hopper, 1 independent hook

Bait capacity: 2kgs

Maximum speed: 50m/minute

Electrical system: DC 12V

Range: 500m +/- dependant on weather and environmental conditions

Lights: 2 front, 2 rear, 2 battery status, 1 hopper release confirm, 1 hook release confirm

Radio handset: 4 channel handset, 2.4GHz

Propulsion: 2 independent motors with 2 maintenance free propellers

Batteries: Lead-acid 6V4.5AH/HR, Ni-MH AA1500mAh 1.2V

Running time (at max speed): 1.5+ hours with lead-acid batteries (6+ hours with lithium batteries)

3

Features

The Waverunner Sport comes with the following outstanding features:

- 1 **3D CAD designed, hydro-dynamic catamaran ABS hull** giving excellent stability and increased buoyancy. The upper deck and the underwater part are fixed by stainless bolt, which makes the maintenance very easy. The waterproof silicon gasket between the upper deck and the hull ensures the boat is 100% waterproof.
- 2 **2.4GHz 4 channel radio system**, delivering superb range with less interference. The handset range is 500m+ dependant on weather and environmental conditions. The handset charger and its AA rechargeable batteries come as standard.
- 3 **Microprocessor controlled variable speed in forward and reverse.** Power to the motors is regulated through a microprocessor to give you unrivalled manoeuvrability and response.
- 4 **Built-in fail-safe** means you won't lose your boat. When the signal is weak, the boat will stop going forward and it will automatically drive in a circle until it finds a strong signal and comes back into full control.
- 5 **Patented bait hopper.** Due to the design of the hopper release system, it will contain and drop even the smallest particles efficiently.
- 6 **Patented hook (rig) release system** can be used to place the rigs exactly where you want them.
- 7 **Two quality, quiet direct drive motors and propellers** delivery optimum performance and prolong battery life.

- 8 **Weed guards** ensure that weed, line and detritus do not foul the propellers or impede performance.
- 9 **Waterproof rocker switches.** All switches and charging sockets are waterproof.
- 10 **Six ultra-high intensity LED lights** are ultra-visible at range, even in daylight.
- 11 **Bi-coloured battery condition meter** for accurate boat battery condition information.

When the battery is fully charged all lights on the meter will light up; when the battery is running at its lowest charge, the red light on the meter will light up.
- 12 **Remote control lighting.** All lights can be turned on and off from the handset when your boat is in use.
- 13 **Handset battery condition meter** for accurate handset battery condition information.

When the battery is fully charged all lights on the meter will light up; when the battery is running at its lowest charge, the red light on the meter will light up.
- 14 **Watertight removable battery system** in the central hull provides easy access to change the battery. Changing the main boat battery takes only seconds.
- 15 **Wireless fish finder.** Our optional fish finders are designed for bait boat usage and enable fantastically accurate bait placement to specific features and depths. Greyscale or colour monitors deliver incredibly detailed information with all the extras available, such as GPS, zoom, bottom hardness, etc. that you would expect from any fish finder. Go to www.waverunnerbaitboats.co.uk for more information.
- 16 **1 year warranty.** In the rare event of a problem, every Waverunner Sport is supported by our comprehensive 1 year warranty. Please see the inside back cover for your warranty registration documents.

4

Charging and battery maintenance

Notes:

- To ensure trouble-free charging, only use the chargers supplied by Waverunner.
- Please make sure that both the boat and handset are switched off while being charged.
- First charge of a new battery to fully charged will take approximately 8 hours.
- First charge of the handset to fully charged will take approximately 8 hours.
- Dry cell batteries (non-rechargeable) may be used in the handset.

Warning: Please do not attempt to charge the handset with non-chargeable batteries in use.

Charging the handset battery

Charging the handset battery with home charger

- 1 Place 8 AA batteries in the compartment on the back of the remote control and close the lid.
- 2 Plug the charger into the wall socket and connect to the charging socket of your handset. A red light on the charger will illuminate to indicate that your battery is not charged. The battery is fully charged when the charger light turns from red to green.

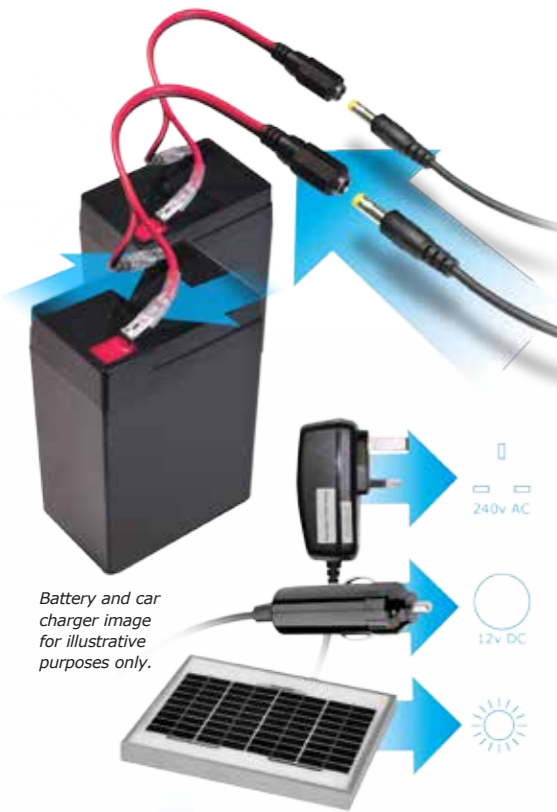
Charging the handset battery with car charger

- 1 Place 8 Ni-MH AA batteries in the compartment on the back of the remote control and close the lid.
- 2 Plug the charger into the cigarette lighter and connect to the charging socket of your handset. A red light will illuminate to indicate that your battery is not charged. The battery is fully charged when the charger light turns from red to green.

Charging the handset battery with the solar panel charger

- 1 Place 8 AA batteries in the compartment on the back of the remote control and close the lid.
- 2 Connect the plug from the solar panel to the charging socket of your handset.
- 3 For best results, ensure that the solar panel is at 90 degrees facing direct sunlight. *Note: Sun hitting the panel at a low angle or through cloud will greatly lower charge efficiency.*





Battery and car charger image for illustrative purposes only.

Charging the boat battery

Charging the lead-acid boat battery

Note: On initial set-up of your boat – open the upper shell; place the lead-acid batteries into the boat; apply the battery connectors and close the upper shell.

The specification for this charger is 15V/1200mA. If you use lithium batteries, the specification of the charger would be 12.6V/3.0A.

If you decide to use lithium batteries, please contact Waverunner as your boat will need to be modified.

Please note that both batteries must be charged together.

- 1 Connect the connector of the battery wires to the connector of the home charger via the 'splitter' supplied.
- 2 Plug the charger into the wall socket. A red light will illuminate to indicate that your batteries are not charged.
- 3 When the light on the charger turns from red to green, the batteries fully charged.

Note: As with the handset, the boat battery can be charged via our optional car charger or solar panel.

Charging the lead-acid boat battery without taking it out of the boat.

You can charge your batteries directly, without taking it out of the boat, via the charging socket on the rear of the boat. Please be sure the power switch is OFF.

Warning:

The lead-acid batteries will release some gas when being charged. Please make sure that the battery cover is opened when you charge the boat in order to avoid pressure building up inside the boat, which could cause serious damage.



5

Using your Waverunner Sport

Important note: Always respect other anglers and fish within your limits (ie. not too close to snags) when using a bait boat.

Handset



- A **Go forward:** Push the right hand joystick forward.
- B **Go backward:** Push the right hand joystick backward.
- C **Turn left:** Push the right hand joystick left.
- D **Turn right:** Push the right hand joystick right.
- E **Go forward / left:** Push the right hand joystick up-left.
- F **Go forward / right:** Push the right hand joystick up-right.
- G **Go backward / left:** Push the right hand joystick down-left.
- H **Go backward / right:** Push the right hand joystick down-right.
- I **Open the bait hopper:** Push the left hand joystick right.
- J **Release the rig hook:** Push the left hand joystick left.
- K **Motor trim:** Roll switches up/down and left/right to equalize thrust so your boat goes straight when the right hand joystick is on forward position. Always start with the dial in the middle position and adjust accordingly.
- L **Hopper and rig hook trim:** Adjust the sensitivity of the hopper and hook release by rolling the switches up/down and left/right.
- M **Lights on/off:** Push the left hand joystick backward.
- N **Back-up power (for use with upgraded accessories):** Push the left hand joystick forward.

Driving your Waverunner Sport

- 1 Connect the antenna for the boat and the antenna for the remote control handset.
- 2 Turn on the remote control handset.
- 3 Turn on the boat by pressing the on and off switch.
- 4 Place the boat in the water and navigate to the desired destination.

Using your Waverunner Sport

Loading and dropping your bait

The left hand joystick operates the bait hopper doors.

- 1 Insert your rig into the hopper, if desired, by passing it under the boat and up through the hopper.
- 2 Close the hopper door manually from below, ensuring 'click' closure.
- 3 Load the hopper with your chosen bait.
- 4 Navigate your boat to your chosen spot
- 5 Moving the left hand joystick to the right to drop the bait hopper door. The white hopper LED on the back right of the boat will flash to confirm the release of your bait.

Loading and releasing your rig

The left hand joystick operates the hook (rig) release system.

- 1 Insert your line(s), rigs or hooks on the hook release system pin situated on the back of the boat.
- 2 Push the left hand joystick to the left to release the line(s), rigs or hooks. The blue hook LED on the back right of the boat will flash to confirm the release of your hook.



Trimming the motor

Differing loads, foreign bodies in the propellers plus wind and water conditions mean that any bait boat will not always drive straight. Use the motor trim roller on the upper-left of the remote control handset to adjust ('trim') the motors so your boat drives straight when the right hand joystick is in the forward (12 o'clock) position

- 1 Adjust the motor trim roller anti clockwise and the boat will steer left.
- 2 Turn the motor trim roller clockwise and the boat will steer right.

Turning the lights on and off

- 3 Turn the lights on and off by pushing the left joystick forward.

Please note that the two front lights will only work when the boat is driving forward.

On returning to the bank

- 1 Do not stop or pick up the boat by the aerial, as damage will occur.
- 2 Switch off the boat first and then the handset.

Notes

- Always turn the handset on first and then the boat. To turn off, turn off the boat first and then the handset. This will ensure that you are always in control of the boat.
- The handset should be protected from water at all times.
- Continued starting, stopping and reversing of the boat drains the battery. Smooth operation at all times is recommended to ensure optimum battery life.
 - Pushing the right (steering and speed) joystick quickly to its extremes will put more stress on the electrical components and the battery.
 - Decreasing your speed slightly (your boat will still be very quick!) will improve battery life.

- The range of the boat is 500m+/- dependant on weather and environmental conditions. Should the signal from the handset become weak, the boat will stop going forward and it will automatically drive in a circle until it finds a strong signal and comes back into full control.
- Even though your bait boat is 100% waterproof, condensation may build up on the inside of your boat:
 - Store your boat and handset in a warm, dry place when not in use, in order to prevent condensation build up.
 - Do not leave your boat in direct sunlight. Because the boat is black it absorbs the sun's heat and can get extremely hot causing condensation at night.
- It is recommended that the bait boat be cleaned with a damp cloth after use.
- After use ensure all batteries are fully charged before you pack the boat away for the next trip.
 - It is recommended that a bankside or solar charger be used to top up the battery after every trip.
 - The boat and handset batteries should be stored outside the boat and handset.
 - Once every two months, give them an overnight charge to ensure the battery remains fully charged to prolong their working life.
 - If the boat is not going to be used for some months then recharge the batteries every 2-3 months.
- Please disconnect the boat antenna and handset antenna after use to avoid breakage.

Waverunner bait boats have been patented and trademarks are in place to cover appearance, design, structure and working principles. These have been registered under English and Chinese law and anyone found to be guilty of infringement of the appropriate patent and/or trademark legislation, will be pursued via appropriate legal proceedings.

6

Bait Boat Optional Accessories (not included)

Medium Deluxe Bait Boat Bag



The main compartment is built to accommodate our Sport, Shuttle or Atom bait boat (and most other brands). Lined with easy-to-clean PVC, the bag features a removable, padded mat to protect your boat and keep it clean on the bank. 2 external pockets to store your handset, batteries and chargers plus a third external pocket is custom-made to take a solar panel. Neoprene carry handles and shoulder strap ensure comfortable transportation and strong, chunky zips ensure smooth operation.

Dimensions: W 46cm x L 66cm x H 25cm

Large Deluxe Bait Boat Bag



The main compartment is built to accommodate our Sport bait boat (and most other brands). Lined with easy-to-clean PVC, the bag features a removable, padded mat to protect your boat and keep it clean on the bank. 2 external pockets to store your handset, batteries and chargers plus a third external pocket is custom made to take a solar panel. Neoprene carry handles and shoulder strap ensure comfortable transportation and strong, chunky zips ensure smooth operation.

Dimensions: W 55cm x L 80cm x H 23cm

Waterproof Handset Cover



Keeps your handset dry when used in the rain, featuring a clear panel for easy use and a shoulder strap for easy transportation both when in and out of use.

Quick Release Handset Lanyard



Our handset lanyard means your handset is always conveniently to hand when you need both hands free during usage. A quick release clip ensures swift attachment and detachment.

Battery image for illustrative purposes only.



Spare Battery

On a long session, you need to be sure you've got all the power you need at your disposal, so it's worth taking a spare battery so you never have to worry about the performance of your boat.

Solar Panel 5w

By taking its power from the sun (even in cloudy conditions), our solar panel will top-up your battery during a session. Plus, it's fully diode protected, so it won't flatten your battery if left plugged in overnight. The framed panel is made from toughened, laminated glass for long life and durability.

Car Charger

A simple, convenient way of charging your boat or handset during or between sessions.

Wireless Fish Finder

Our wireless fish finder delivers accurate, easy-to-read swim information from your boat to you on the bank. A 4 grayscale level, 4.5" screen means you can interpret the nature of the lake or riverbed easily and efficiently and high contrast and backlight features mean you view your screen whatever the weather or time of day. The wireless fish finder can be fitted by us to any of our boats.

- Display size 4.5in FSTNLCD
- Display resolutions 240 x 128 pixels
- Grayscale 4 levels
- Adjustable backlight and contrast
- Visible under sunlight
- Languages: English, German, French and Russian
- Range 300-400m
- Sonar frequency 433.9mhz
- Sonar beam angle 80deg@- 10db
- Sonar alarms fish/shallow/low battery
- Water and air temperature display



Car Charger image for illustrative purposes only.



Toslon TF640 GPS Feature Finder

The Toslon TF640 GPS Feature Finder will fit any Waverunner bait boat. It combines high-accuracy GPS; digital, wireless sonar and an electronic compass. The GPS system enables you to accurately drive your boat to any pre-marked hotspot, with pinpoint accuracy. The advanced sonar shows you the actual bottom structure and any fish, all in full colour. Additionally, the electronic compass shows you the direction your boat is heading which means you can navigate your boat in the dark, or in fog etc.

Features:

GPS data display shows:

- Distance to target
- Distance to home
- Speed
- ETA
- Direction
- Route
- Time
- Battery meter
- Signal lost alarming
- Satellite transmission quality indicator
- Latitude/longitude
- Detailed target information including; icon, name, date, etc.
- 20 RF channels to eliminate interference
- State-of-the-art digital transmission
- Real-time display communicates the bottom make-up precisely where the boat is located
- Colour line distinguishes fish from bottom structure and displays hardness
- Depth reading above all marked spots
- Fish, shallow, low boat and display battery alarms



7

Warranty

We offer you a 12 months warranty from the date of purchase. The guarantee covers any defects arising from the drive unit and the electrical and electronic parts of the boat, faulty material and workmanship. It does not cover batteries, damage arising from improper use, breakage, or normal wear of the boat or associated equipment. The guarantee is invalidated if repairs or modifications are undertaken by unauthorised persons.

The guarantee period for the rechargeable lead-acid battery and the rechargeable Ni-MH batteries is 12 months from the date of purchase.

Please complete and return the form opposite to register your Waverunner Warranty.

Waverunner Sport 1 year Warranty

(Please use block capitals and return to address below)

NAME _____

ADDRESS _____

POST CODE _____

TELEPHONE NUMBER _____

EMAIL ADDRESS _____

NAME OF OUTLET PURCHASED FROM _____

DATE OF PURCHASE _____

SERIAL NUMBER _____

*Found in back of handset or under the boat lid facing forward on a white sticker

Your warranty

Please fill in and return this form on date of purchase and send back to address below left.

Any returned boat that does not have a returned warranty form will not be under warranty. Only the original copy will be accepted, not a photo copy.

We are pleased to offer a full manufacturers 2 year warranty with our twin-hopper Waverunner bait boats, excluding batteries, subject to a full service 1 year after purchase. Waverunner Atom, Shuttle and Sport models carry a 1 year warranty.

The first year of the warranty will cover collection from UK main land only and repair free of charge covering any defects arising from the drive unit and the electronic parts of the boat, faulty material or workmanship not covering damage caused by incorrect use accidental damage and any work carried out by any unauthorised persons.

After the first year the owner has a maximum of 14 days, one year after date that boat was registered to book a full service to extend the warranty into the second year, if not serviced after this time all repairs and carriage would be charged.

The warranty covers any defects arising from the drive unit and the electronic parts of the boat, faulty material or workmanship. Carriage rates may vary depending on location, Scottish highlands etc... 2 year warranty excludes Atom and Shuttle bait boats, both carry standard 12 months warranty.

We strongly suggest keeping all original packing for your boat as in the unlikely event of a fault with your boat suitable packing for such an item of this size is hard to source to ensure boat is received back for repair undamaged.

Please note any boat that is received back damaged due to lack of correct packing will not be repaired under any guarantee.

It is important to retain the retailers receipt as proof of purchase, please staple a copy of your receipt to your warranty form when you return.

If for whatever reason this product is replaced during the guarantee period, the guarantee on the new product will be calculated from original purchase date.

To qualify for your guarantee, the product must have been used according to the instructions supplied. Collections made for repair only within uk mainland only

Genesis sports ltd will not be responsible for any carriage charges for any boats sold outside of uk mainland that need repair.

Genesis sports ltd will not held responsible for any consequential losses due to bait boat failure.

By signing this warranty form you are agreeing to all terms stated. Please note no confirmation will be sent back when warranty form is received.

Exclusions

Products shall not be liable to replace or repair under terms of guarantee where:

- 1.The fault has been caused or is attributable to accidental use, misuse, negligent or used contrary to the manufactures recommendations or where the fault has been caused by power surges or damage caused in transit.
- 2.Repairs have been attempted by persons other than our service staff.
- 3.The product has been used for hire purposes.
- 4.The product is second hand.

This guarantee is offered as an additional benefit and does not affect your statutory rights as a consumer.

Return to:

Genesis Sports Ltd
 Genesis House
 Chapel st
 Hindley
 Wigan
 WN2 3AD

Email: sales@sabertackle.com

www.waverunnerbaitboats.co.uk

Please tick at if you not wish to receive information from Waverunner regarding new products and offers

SIGNED _____

W A R R A N T Y



Genesis Sports Ltd

Genesis House
Chapel st
Hindley
Wigan
WN2 3AD

Email: sales@sabertackle.com

www.waverunnerbaitboats.co.uk